

N.E. 1/4
SECTION 33, T.6N., R.2W., S.L.B. & M.

IN WEBER COUNTY

TAXING UNIT: 53,377

SCALE 1" = 200'

SEE PAGE 78-2

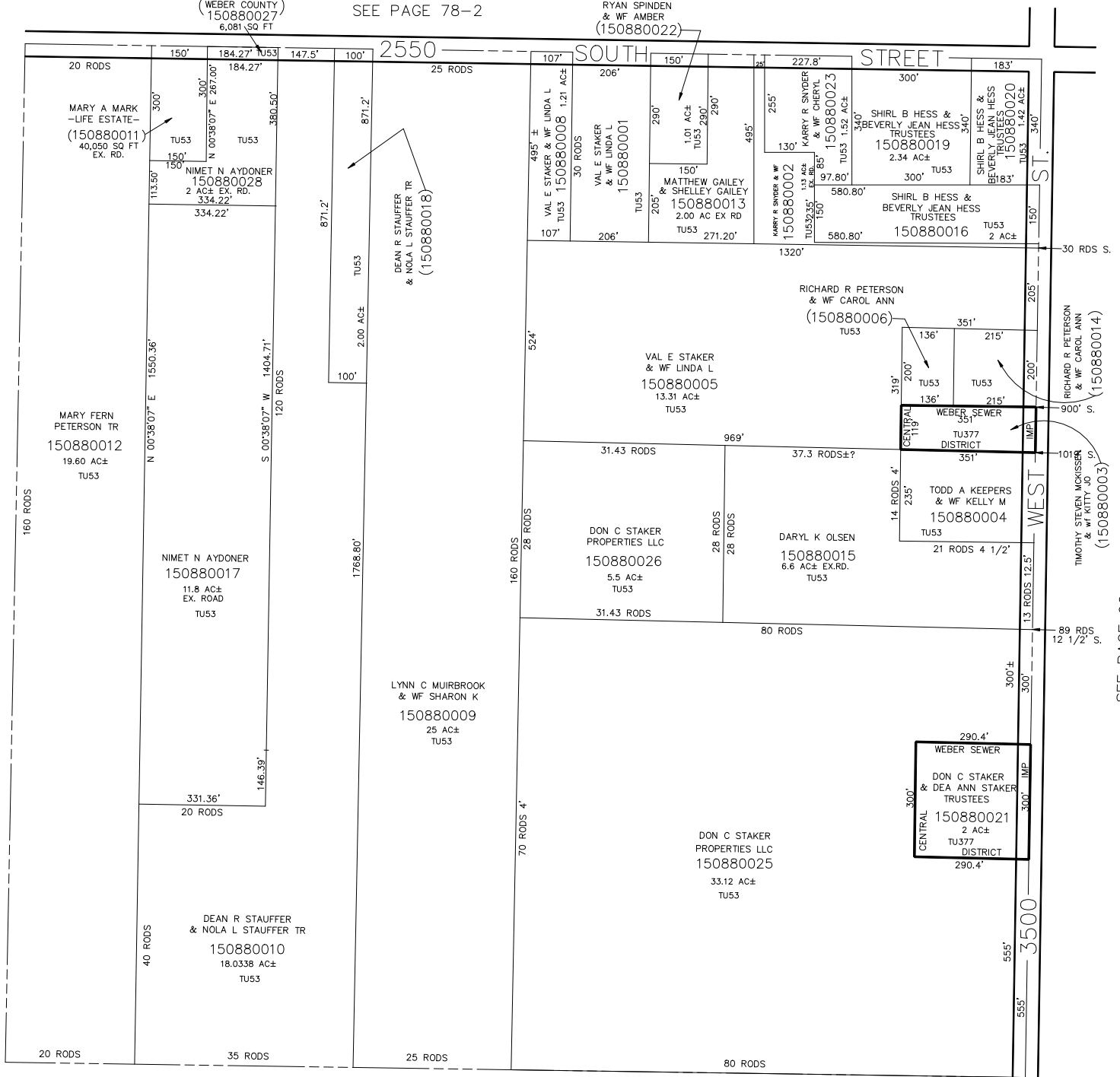
RYAN SPINDEN
& WF AMBER
(150880022)

(WEBER COUNTY)
150880027
6,081 SQ FT

SEE PAGE 91

SEE PAGE 90

SEE PAGE 92



SEE PAGE 87